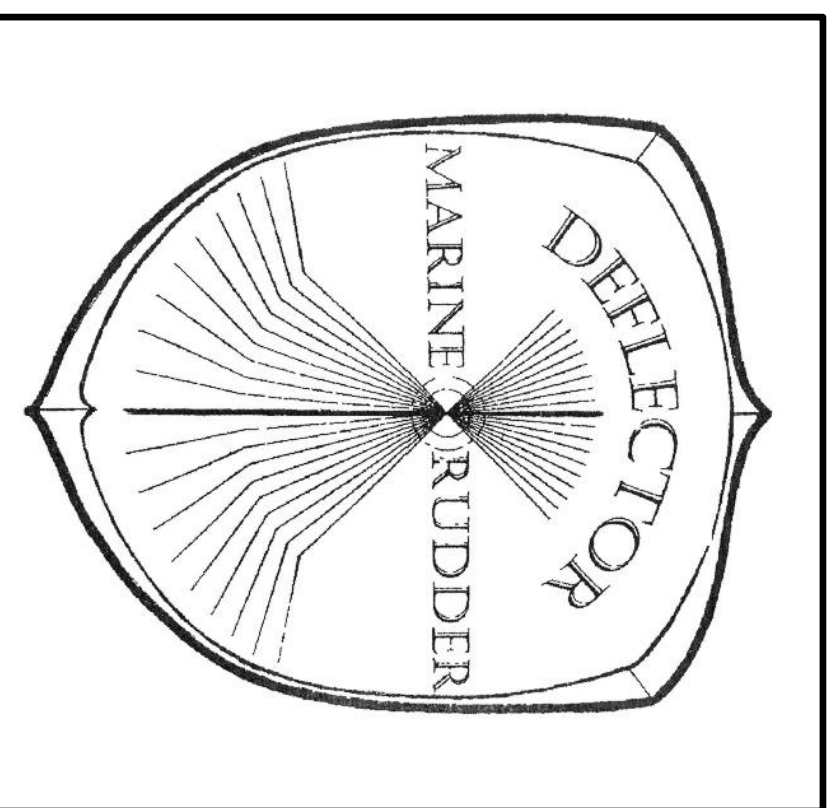


DMR Primary Essential Dimensions Worksheet: (Units assumed to be inches)

Primary Baseline: CL of Rudder Mainshaft

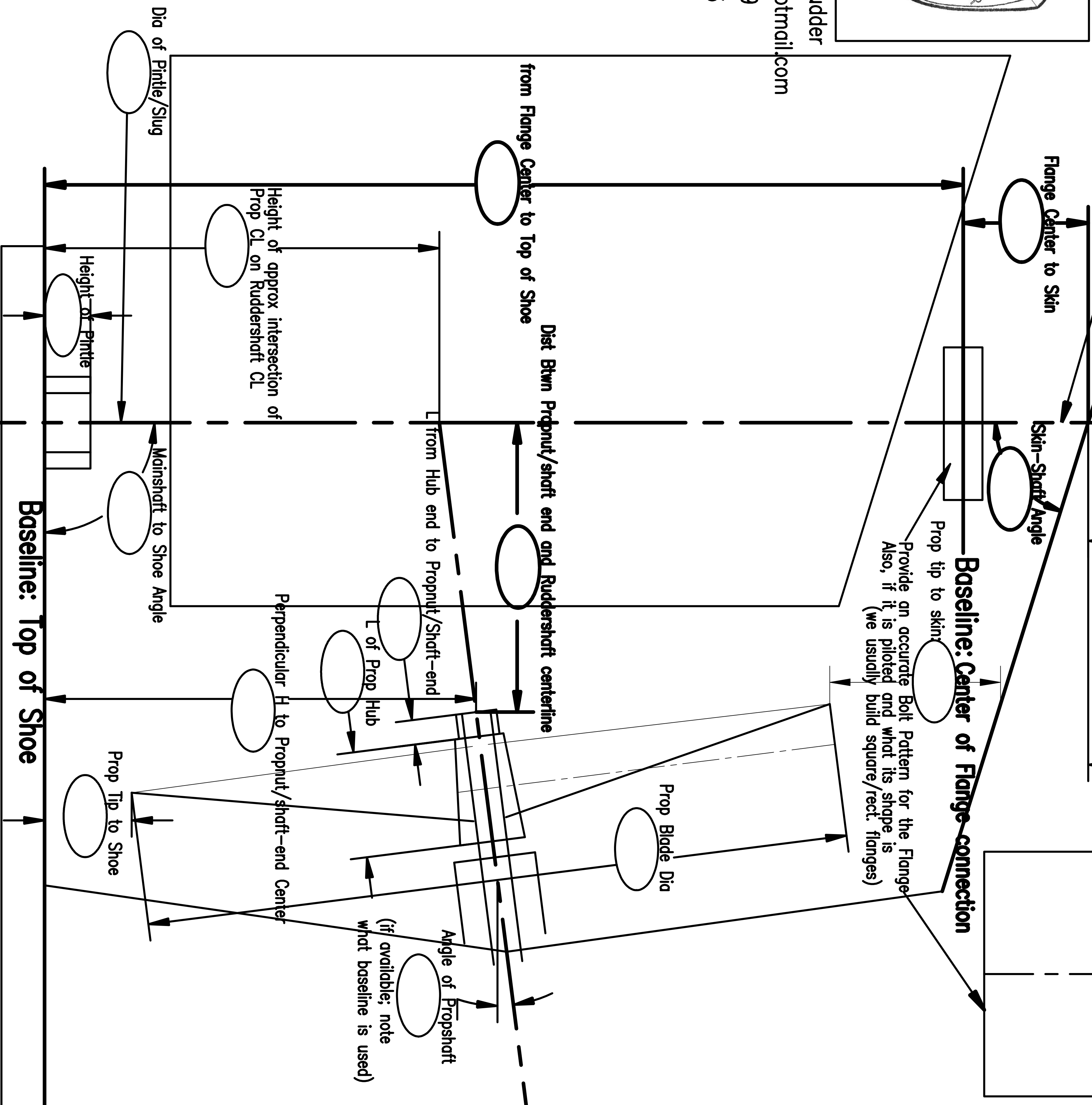
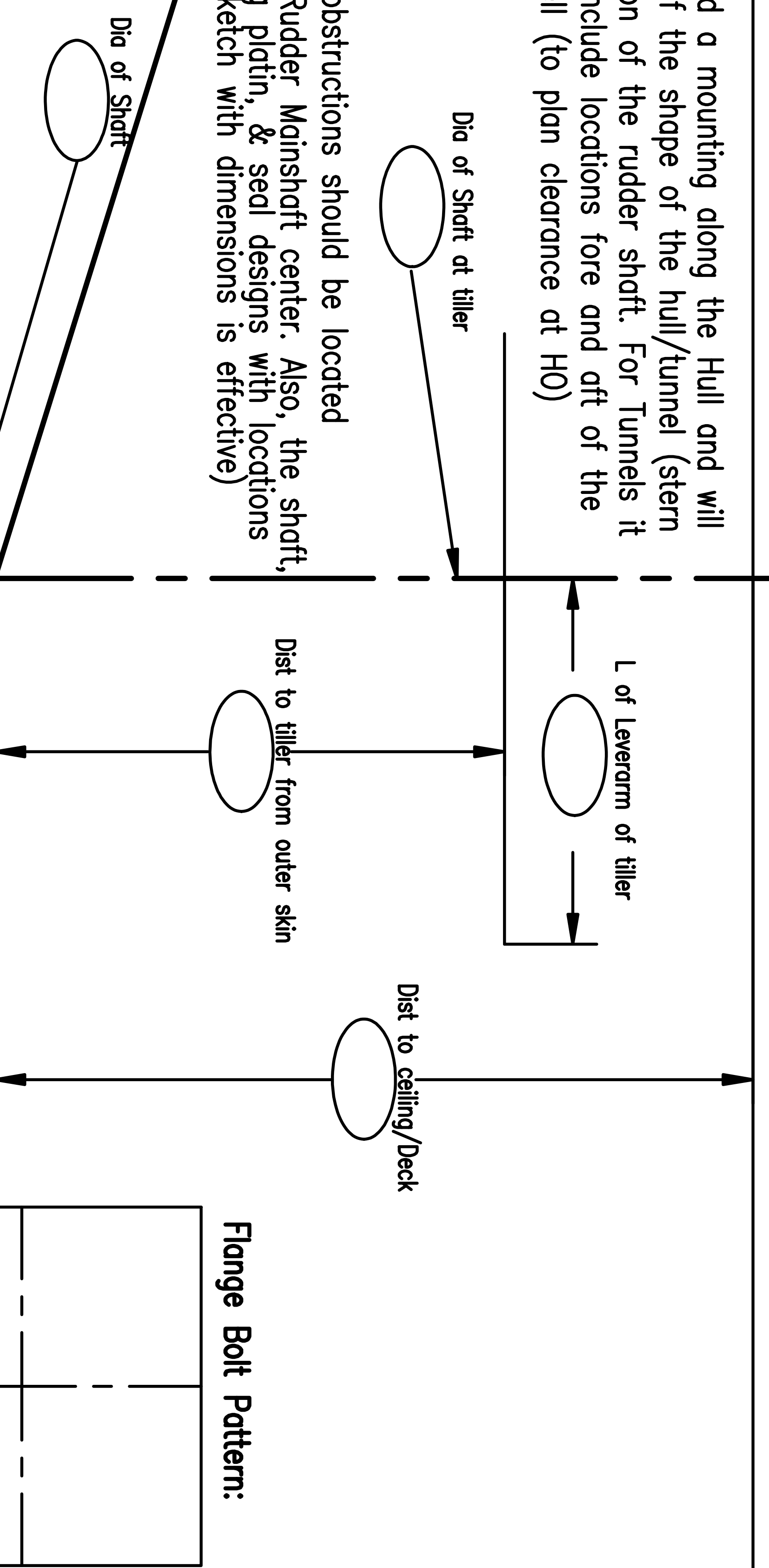
We will need to add a mounting along the Hull and will need a depiction of the shape of the hull/tunnel (stern view) @ the location of the rudder shaft. For Tunnels it is appropriate to include locations fore and aft of the rudder shaft as well (to plan clearance at H0)

Any potential obstructions should be located in ref to the Rudder Mainshaft center. Also, the shaft, bearings, lifting platin, & seal designs with locations (A sketch with dimensions is effective)



Deflector Marine Rudder
 lws2rudderpower@hotmail.com
 Ph: 360-777-8289
 Fx: 360-777-8023

- Top Speed Ahead:
- Top Speed Reverse:
- TYP Loaded Speed:



Vessel Name: _____ Contact Name: _____ Email: _____ Phone: _____