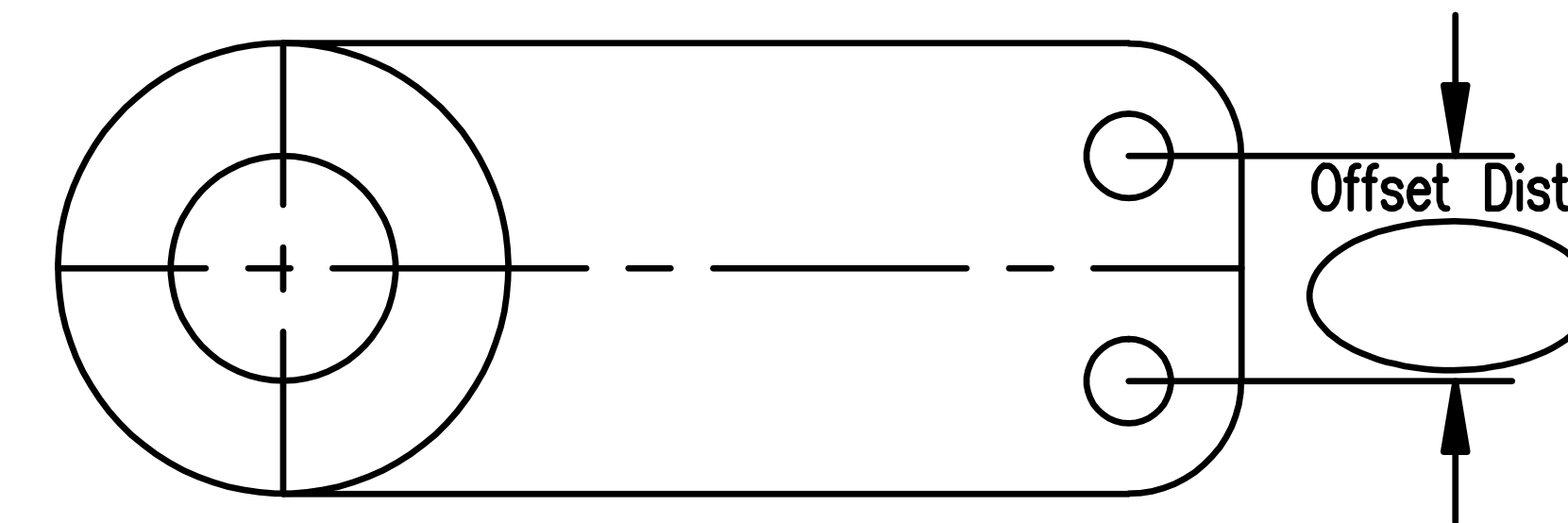


Measurements(inches) to be taken from Center Lines (CL) and Pivot Centers

If using a tiller with ram pivots offset, we want that too:



It would also be useful to have the Shaft design at the tiller connection

Hydraulic Rams: (info as available. some is easily measured)

Stroke Used:

Operating Pressure:

Stroke max:

Stroke max:

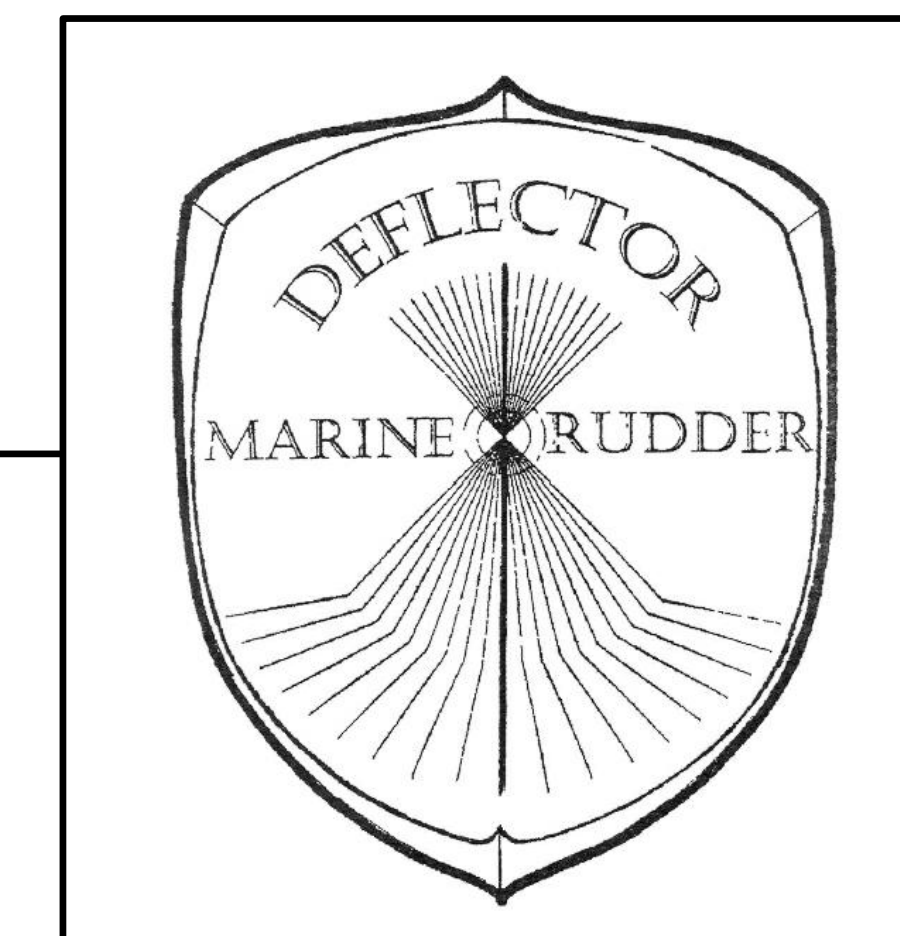
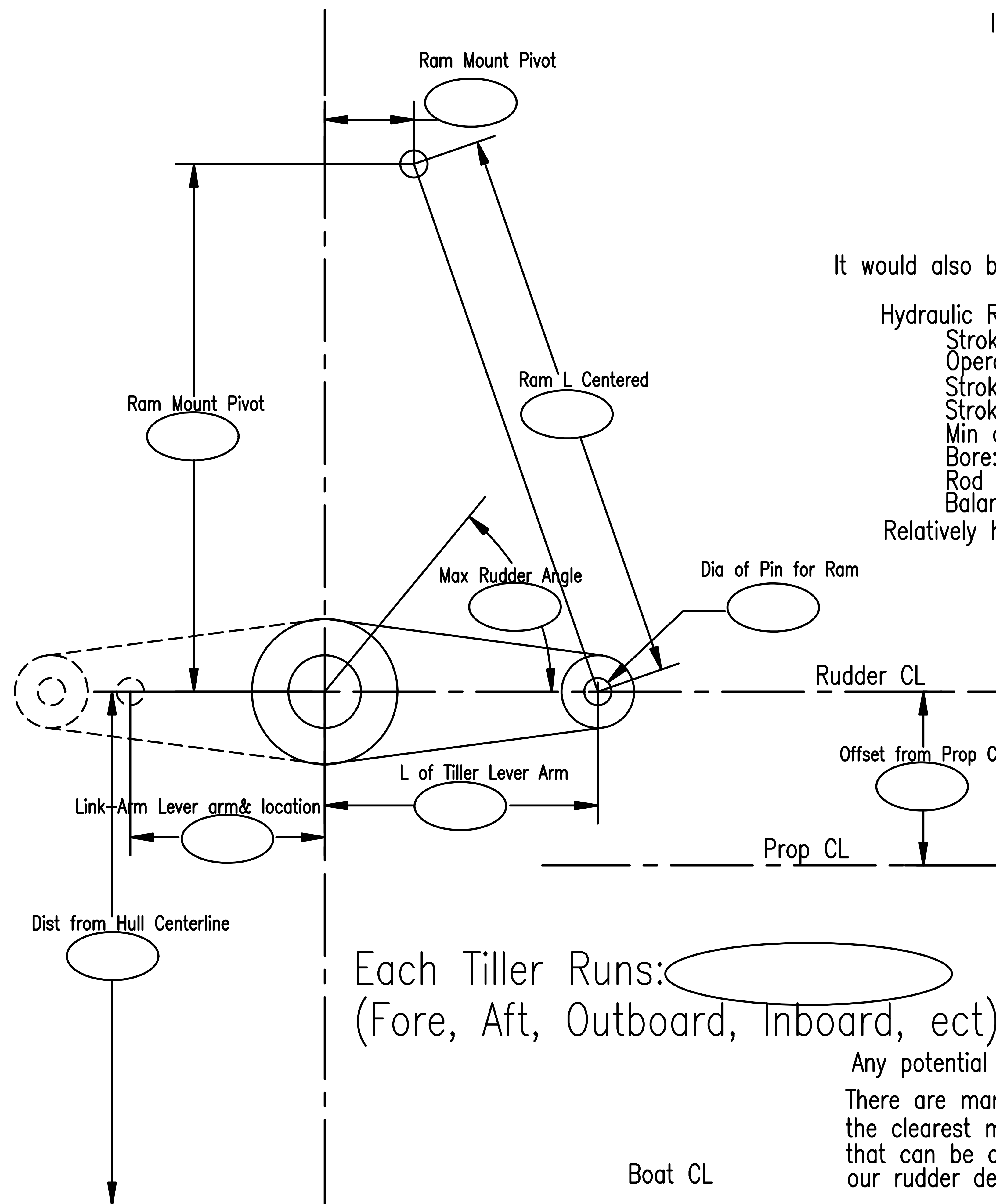
Min compressed Length:

Bore:

Rod Dia:

Balanced? Single or Double-Acting?

Relatively how fast are the steering hydraulics?(ie slow, fast, adequate)



Deflector Marine Rudder
 lws2rudderpower@hotmail.com
 Ph: 360-777-8289
 Fx: 360-777-8023

Each Tiller Runs:
 (Fore, Aft, Outboard, Inboard, ect)

Any potential obstructions should be located in ref to Ruddershaft Center
 There are many types of Tillers and connections so a Sketch is often
 the clearest method. Also, if you have a preferential system or direction
 that can be accommodated. We typically evaluate steering systems during
 our rudder designs to maximize steering and remove deficiencies.

Vessel Name:

Contact Name:

Email:

Phone: